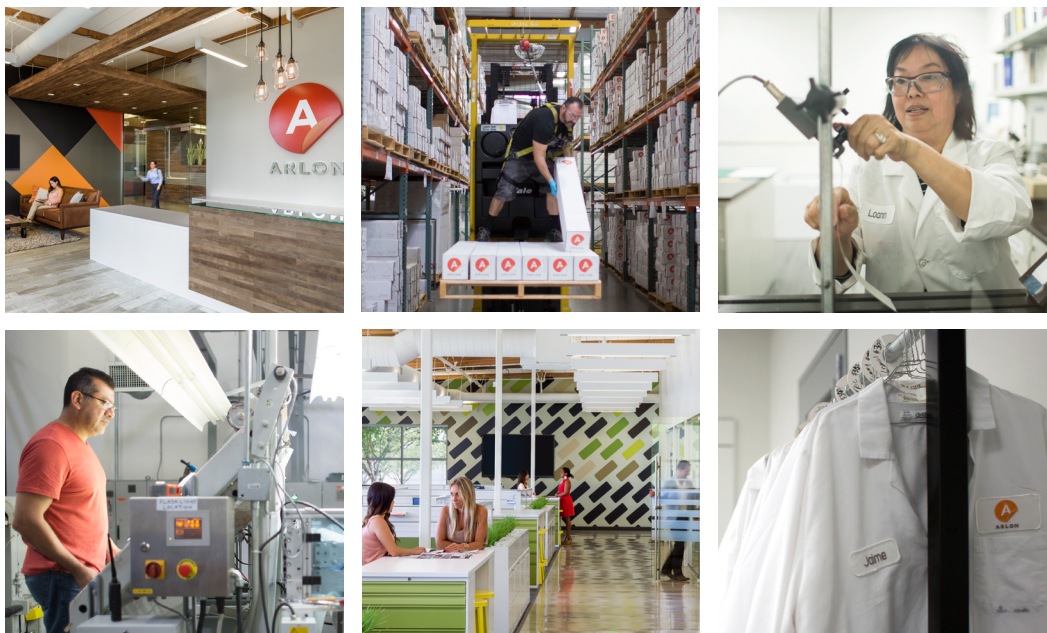




ARLON

PRINT MEDIA PRODUCTS

Wrapped in IllumiNITE Wrap™ and SLX™ Cast Wrap by Digital Precision



Your Partner of Choice

Arlon, established in 1958 near Los Angeles, California, is a leading global manufacturer of pressure-sensitive adhesive vinyls for the sign and graphics industry.

As one of the world's most experienced casting companies, Arlon has gained a worldwide reputation for quality and innovation.

Arlon is proudly ISO 9001:2015 certified.



TECHNICAL SERVICES:

- Toll Free: 1 877 ARLON98 / 1 877 275 6698
- GraphicsTechnicalSupport@arlon.com

CUSTOMER SERVICE:

- 1 800 232 7161 / 714 985 6300
- GraphicsOrders@arlon.com



WRAPITRIGHT.COM

WrapItRight.com gives you access to expert advice and tutorials from industry leaders and specialists!

- How-to video library featuring vehicle wraps, commercial signage, and digital printing techniques.
- Create custom playlists and watch videos later.
- Get updates on Trade Shows and Training Events.

Throughout this brochure you will see companion how-to videos featuring recommended methods and techniques. Videos can be accessed by using the QR code or visiting wrapitright.com.

Arlon Technology



FLITE Technology™: Arlon's brand name for our lite contact system which allows graphics to float over a substrate until firm pressure is applied. FLITE Technology™ guarantees the fastest install while ensuring long-term bond and clean removability.



X-Scape Technology™: Arlon's brand name for our air-egress technology which allows air to release through tiny channels in the adhesive backed vinyl used for fleet, vehicle and general signage applications. X-Scape Technology™ allows installers to achieve a speedy installation while maintaining a high enough tack to ensure long-term bond.

Table of Contents

Fleet & Vehicle Graphics	2
Exterior Building & Wall Wraps	4
Commercial & Backlit Signage	6
Multi-Purpose	8
Interior Décor	10
Industrial	12
Promotional	14
Promotional Banner	16
Overlaminates	18
Specialty Overlaminates	20

Your Ideas in Motion

From start to finish, consistent print quality, ease of application, and versatility will keep your business moving no matter how many vehicles you're wrapping.



Wrapped in SLX™ Cast Wrap with Series 3270 Overlamine by Poperzy

	DESCRIPTION	FACE FILM THICKNESS	ADHESIVE	RELEASE LINER	FINISH	APPLICATIONS
SLX™ CAST WRAP	Premium Cast Film with Low Profile FLITE Technology™	2-Mil (50 Micron)	Clean Removing, Repositionable (Light Gray)	Lay-Flat Polycoated with Low Profile FLITE Technology™	Gloss	Vehicle Graphics (Full, Partial) Vehicle Decals Fleet Graphics
DPF 6100XLP	Premium Cast Film with Low Profile X-Scape Technology™	2-Mil (50 Micron)	Clean Removing, Repositionable (Light Gray)	Lay-Flat Polycoated with Low Profile X-Scape Technology™	Gloss	Vehicle Graphics (Full, Partial) Vehicle Decals Fleet Graphics
DPF 6000XRP	Premium Multi-Purpose Cast Film with X-Scape Technology™	2-Mil (50 Micron)	Clean Removing, Repositionable (Light Gray)	Lay-Flat Polycoated with X-Scape Technology™	Gloss	Vehicle Graphics (Full, Partial) Vehicle Decals Fleet Graphics Multi-Purpose Commercial Wall Graphics (Interior, Exterior)
DPF 6000RP WHITE	Premium Multi-Purpose Cast Film	2-Mil (50 Micron)	Clean Removing, Repositionable (Light Gray)	Lay-Flat Polycoated	Gloss	Vehicle Graphics (Full, Partial) Vehicle Decals Fleet Graphics Multi-Purpose Commercial Wall Graphics (Interior, Exterior)
DPF 4600LX	High Performance Multi-Purpose Film with Low Profile X-Scape Technology™	3.2-Mil (80 Micron)	Clean Removing, Repositionable (Light Gray)	Lay-Flat Polycoated with Low Profile X-Scape Technology™	Gloss	Vehicle Graphics (Partial) Vehicle Decals Fleet Graphics Window Graphics Multi-Purpose Commercial Wall Graphics (Interior)
ILLUMINITE WRAP™	Fleet Grade * Reflective Film with Low Profile FLITE Technology™	5-Mil (125 Micron)	Clean Removing, Repositionable (Light Gray)	Lay-Flat Polycoated with Low Profile FLITE Technology™	Gloss	Vehicle Graphics (Full, Partial) Vehicle Decals Fleet Graphics Fleet Markings
DPF 2400	Fleet Grade * Reflective Film	5-Mil (125 Micron)	Permanent (Clear)	Lay-Flat Polycoated	Gloss	Vehicle Graphics (Partial) Vehicle Decals Fleet Graphics Fleet Markings
DPF 45WF	One-Way Vision Window Film 60/40 Perforated Pattern	6-Mil (150 Micron)	Clean Removing, Low Tack (Clear)	Lay-Flat Polycoated	Satin	Window Graphics



Wrapped in IllumiNITE Wrap™ with Series 3220 Overlaminate by Incognito Wraps



Wrapped in DPF 4600LX by Moldex

RECOMMENDED SURFACES	DURABILITY (UNPRINTED)	ROLL WIDTHS	ROLL LENGTHS	COMPATIBLE OVERLAMINATE	INK COMPATIBILITY
Compound Curves / Deep Channels Concave Surfaces / Corrugated Panels Fleet Panels (Flat with Rivets)	7 Years	30" / 48" 54" / 60"	50 Yards	Series 3210 / Series 3220 Series 3270 / Series 3310	Eco-Solvent / Solvent UV / Latex Certified for HP Latex Inks
Compound Curves / Deep Channels Concave Surfaces / Corrugated Panels Fleet Panels (Flat with Rivets)	7 Years	30" / 48" 54" / 60"	25 Yards ♣ 50 Yards	Series 3200 / Series 3210 Series 3220 / Series 3270 Series 3310	Eco-Solvent / Solvent UV / Latex Certified for HP Latex Inks
Compound Curves / Deep Channels Concave Surfaces / Corrugated Panels Fleet Panels (Flat with Rivets) Smooth Walls	7 Years	30" / 48" 54" / 60"	25 Yards ♣ 50 Yards	Series 3200 / Series 3210 Series 3220 / Series 3270 Series 3310	Eco-Solvent / Solvent UV / Latex Certified for HP Latex Inks
Compound Curves / Deep Channels Concave Surfaces / Corrugated Panels Fleet Panels (Flat with Rivets) Smooth Walls	7 Years	30" / 54" 60"	25 Yards ♣ 50 Yards	Series 3200 / Series 3210 Series 3220 / Series 3270 Series 3310	Eco-Solvent / Solvent UV / Latex Certified for HP Latex Inks
Soft Curves Fleet Panels (Flat without Rivets) Common Sign Substrates Smooth Walls Glass	7 Years ▲	30" / 54" / 60"	50 Yards	Series 3210 / Series 3220 Series 3310 / Series 3420	Eco-Solvent / Solvent UV / Latex Certified for HP Latex Inks
Smooth, Flat Panels / Compound Curves Moderate Channels / Soft Curves Concave Surfaces / Corrugated Panels Fleet Panels (Flat with Rivets)	7 Years	48"	10 Yards 25 Yards 50 Yards	Series 3210 Series 3220 Series 3200	Eco-Solvent / Solvent UV / Latex Certified for HP Latex Inks
Smooth, Flat Panels / Compound Curves Moderate Channels / Soft Curves Fleet Panels (Flat with Rivets)	7 Years	48"	10 Yards 25 Yards 50 Yards	Series 3210 Series 3220 Series 3200	Eco-Solvent / Solvent
Glass	1 Year	54" / 60"	164 Feet	Series 3200	Eco-Solvent / Solvent UV / Latex ♦

* Fleet Grade exceeds engineering standards ♣ Only available in 54" width ▲ 7 year durability applies when paired with an Arlon cast overlaminate ♦ Optimal printing on HP Latex 360

WRAPITRIGHT®

INSTRUCTIONAL VIDEO LIBRARY



WATCH THE VIDEO ▶

Applying Vinyl into a Deep Channel

Many commercial wraps include difficult applications over and around deep channels. This video shows the ideal technique for installing film into channels.

For more videos, visit wrapitright.com

PRO TIPS

SIMPLE & EASY Vehicle Prep!

When cleaning a vehicle before an installation use a simple degreaser, like your average dish soap, instead of a common washing wax.

Surfaces are not **Equal**

Transform hard-to-stick brick, concrete and stucco into larger than life graphics.
From the window to the walls, no surface is left untouched.



Wrapped in DPF 8000™ Ultra Tack by Candid Worldwide

	DESCRIPTION	FACE FILM THICKNESS	ADHESIVE	RELEASE LINER	FINISH	APPLICATIONS
DPF 6700	Premium Cast Wall Wrap Film	2-Mil (50 Micron)	Permanent (Clear)	Lay-Flat Polycoated	Gloss	Building Wraps Wall Graphics (Interior, Exterior)
DPF 8000™ ULTRA TACK	Industrial Grade Multi-Purpose Calendered Film for Hard-to-Stick Surfaces	3.5-Mil (90 Micron)	Permanent, Ultra Tack (Clear)	Lay-Flat Polycoated	Satin	Building Wraps Wall Graphics (Exterior) ABS Plastic Graphics
DPF 8200 HIGH TACK	Industrial Grade Multi-Purpose Calendered Film for Exterior Wall and Low Surface Energy Substrates	3.5-Mil (90 Micron)	Permanent, High Tack (Clear)	Lay-Flat Polycoated	Satin	Building Wraps Wall Graphics (Exterior) Low Surface Energy Substrates
DPF 47WF	One-Way Vision Window Film 70/30 Perforated Pattern	6-Mil (150 Micron)	Clean Removing, Low Tack (Clear)	Lay-Flat Polycoated	Satin	Window Graphics



Wrapped in DPf 8200 High Tack



Wrapped in DPf 47WF with Series 3200 Overlaminate by Banner Up Signs



WATCH THE VIDEO ▶

Tiling for Large Wall Graphics

Successful installations of large wall graphics are dependent upon preparation and good design practices. This video will show you how to prepare a graphic for installation.

For more videos, visit wrapitright.com

RECOMMENDED SURFACES	DURABILITY (UNPRINTED)	ROLL WIDTHS	ROLL LENGTHS	COMPATIBLE OVERLAMINATE	INK COMPATIBILITY
Brick, Concrete & Stucco Textured Surfaces & Substrates	7 Years *	30" / 48" 54" / 60"	50 Yards	Series 3200 / Series 3210 Series 3220	Eco-Solvent / Solvent UV / Latex Certified for HP Latex Inks
Brick, Concrete & Stucco Textured Surfaces & Substrates Smooth Walls ABS Plastics	7 Years *	30" / 48" 54" / 60"	50 Yards	Series 3210 / Series 3220 Series 3420 ProTec Series 3960	Eco-Solvent / Solvent UV / Latex Certified for HP Latex Inks
Smooth and Textured Surfaces & Substrates Brick, Concrete & Stucco Low Surface Energy Substrates	7 Years *	30" / 48" 54" / 60"	50 Yards	Series 3210 / Series 3220 Series 3420 ProTec Series 3960	Eco-Solvent / Solvent UV / Latex Certified for HP Latex Inks
Glass	1 Year	54" / 60"	164 Feet	Series 3200	Eco-Solvent / Solvent UV / Latex ♣

* See PIB for warranty exclusions ♣ Optimal printing on HP Latex 360



THE IMPORTANCE OF Outgassing

Before laminating your solvent printed graphic, always allow
24 hours of outgassing.

Make an Impact

Don't let your signage get lost in the crowd. Choosing a film with both flexibility and vibrant print quality will give you the visibility you need for your graphics to perform everyday.

	DESCRIPTION	FACE FILM THICKNESS	ADHESIVE	RELEASE LINER	FINISH	APPLICATIONS
DPF 4600LX	High Performance Multi-Purpose Film with Low Profile X-Scape Technology™	3.2-Mil (80 Micron)	Repositionable (Light Gray)	Lay-Flat Polycoated with Low Profile X-Scape Technology™	Gloss	Multi-Purpose Commercial Wall Graphics (Interior) Vehicle Graphics (Partial) Vehicle Decals Fleet Graphics Window Graphics
DPF 4500GLX/MLX	Intermediate Calendered Film with Low Profile X-Scape Technology™	3-Mil (75 Micron)	Permanent (Light Gray)	Lay-Flat Polycoated with Low Profile X-Scape Technology™	Gloss Matte	Standard Signage (Permanent) Display Graphics
DPF 4500GX	Intermediate Calendered Film with Low Profile X-Scape Technology™	3-Mil (75 Micron)	Permanent (Clear)	Lay-Flat Polycoated with Low Profile X-Scape Technology™	Gloss	Standard Signage (Permanent) Display Graphics Window Graphics
DPF 4500GT/MT	Intermediate Calendered Film	3-Mil (75 Micron)	Permanent (Light Gray)	Lay-Flat Polycoated	Gloss Matte	Standard Signage (Permanent) Display Graphics
DPF 4500G WHITE/CLEAR	Intermediate Calendered Film	3-Mil (75 Micron)	Permanent (Clear)	Lay-Flat Polycoated	Gloss	Standard Signage (Permanent) Display Graphics Second Surface Signage * Window Graphics *
DPF 6000RP CLEAR	Premium Clear Cast Film	2-Mil (50 Micron)	Permanent (Clear)	Lay-Flat Polycoated	Gloss	Backlit Signage Standard Signage (Permanent) Display Graphics Second Surface Signage Window Graphics Vehicle Graphics (Full, Partial) Fleet Graphics
DPF 6500	Premium Translucent Cast Film	2-Mil (50 Micron)	Permanent (Clear)	Lay-Flat Polycoated	Gloss	Backlit Signage Display Graphics



Wrapped in DPF 4500GLX



Wrapped in DPF 6000RP Clear

RECOMMENDED SURFACES	DURABILITY (UNPRINTED)	ROLL WIDTHS	ROLL LENGTHS	COMPATIBLE OVERLAMINATE	INK COMPATIBILITY
Common Sign Substrates / Glass Smooth Walls / Soft Curves Fleet Panels (Flat without Rivets)	7 Years ♣	30" / 54" / 60"	50 Yards	Series 3210 / Series 3220 Series 3310 / Series 3420	Eco-Solvent / Solvent UV / Latex Certified for HP Latex Inks
Common Sign Substrates Glass	5 Years	30" / 48" ▲ 54" / 60"	50 Yards	Series 3210 / Series 3220 Series 3420	Eco-Solvent / Solvent UV / Latex
Common Sign Substrates Glass	5 Years	30" / 54" / 60"	50 Yards	Series 3210 / Series 3220 Series 3420	Eco-Solvent / Solvent UV / Latex
Common Sign Substrates Glass	5 Years	30" / 48" 54" / 60"	50 Yards	Series 3210 / Series 3220 Series 3420	Eco-Solvent / Solvent UV / Latex
Common Sign Substrates Glass	5 Years	30" / 48" 54" / 60"	50 Yards	DPF 4500G White: Series 3210 Series 3220 / Series 3420 DPF 4500G Clear: Series 3200	Eco-Solvent / Solvent UV / Latex ♦
Glass / Common Sign Substrates Compound Curves / Deep Channels Concave Surfaces / Corrugated Panels Fleet Panels (Flat with Rivets)	7 Years	30" / 48" 54" / 60"	50 Yards	Series 3200	Eco-Solvent / Solvent UV / Latex
Glass / Sign Plexi Common Sign Substrates	7 Years	30" / 48" 54" / 60"	25 Yards ♦ 50 Yards	Series 3200 / Series 3210 Series 3220 / Series 3350	Eco-Solvent / Solvent UV / Latex Certified for HP Latex Inks

* Use with DPF 4500G Clear ♣ 7 year durability applies when paired with an Arlon cast overlaminate ▲ Only available in 48" width for DPF 4500GLX ♦ Not compatible with DPF 4500G Clear
 ♦ Only available in 54" width

WRAPITRIGHT®

INSTRUCTIONAL VIDEO LIBRARY



WATCH THE VIDEO ▶

Flat Substrate Application

Laying out large graphics by hand can be difficult to do. This video shows how you can use air-egress vinyl to make these application projects simple and consistent.

For more videos, visit wrapitright.com

PRO TIPS



HOW TO PREVENT Pre-adhesion

Using an application fluid for wet applications will help the graphic float onto the surface to prevent pre-adhesion.

Freedom of Application

This collection features our most versatile films allowing you to use them for multiple applications while maximizing profitability.



Wrapped in DPF 4600LX

	DESCRIPTION	FACE FILM THICKNESS	ADHESIVE	RELEASE LINER	FINISH	APPLICATIONS
DPF 6000XRP	Premium Multi-Purpose Cast Film with X-Scape Technology™	2-Mil (50 Micron)	Clean Removing, Repositionable (Light Gray)	Lay-Flat Polycoated with X-Scape Technology™	Gloss	Multi-Purpose Commercial Wall Graphics (Interior, Exterior) Vehicle Graphics (Full, Partial) Vehicle Decals Fleet Graphics
DPF 6000RPP WHITE	Premium Multi-Purpose Cast Film	2-Mil (50 Micron)	Clean Removing, Repositionable (Light Gray)	Lay-Flat Polycoated	Gloss	Multi-Purpose Commercial Wall Graphics (Interior, Exterior) Vehicle Graphics (Full, Partial) Vehicle Decals Fleet Graphics
DPF 4600LX	High Performance Multi-Purpose Film with Low Profile X-Scape Technology™	3.2-Mil (80 Micron)	Repositionable (Light Gray)	Lay-Flat Polycoated with Low Profile X-Scape Technology™	Gloss	Multi-Purpose Commercial Wall Graphics (Interior) Vehicle Graphics (Partial) Vehicle Decals Fleet Graphics Window Graphics
DPF 8000™ ULTRA TACK	Industrial Grade Multi-Purpose Calendered Film for Hard-to-Stick Surfaces	3.5-Mil (90 Micron)	Permanent, Ultra Tack (Clear)	Lay-Flat Polycoated	Satin	Building Wraps Wall Graphics (Exterior) ABS Plastic Graphics
DPF 8200 HIGH TACK	Industrial Grade Multi-Purpose Calendered Film for Exterior Wall and Low Surface Energy Substrates	3.5-Mil (90 Micron)	Permanent, High Tack (Clear)	Lay-Flat Polycoated	Satin	Building Wraps Wall Graphics (Exterior) Low Surface Energy Substrates



Wrapped in DPF 8200 High Tack



Wrapped in DPF 6000RP White by Graphics Unlimited

RECOMMENDED SURFACES	DURABILITY (UNPRINTED)	ROLL WIDTHS	ROLL LENGTHS	COMPATIBLE OVERLAMINATE	INK COMPATIBILITY
Smooth Walls / Compound Curves Deep Channels / Concave Surfaces Corrugated Panels Fleet Panels (Flat with Rivets)	7 Years	30" / 48" 54" / 60"	25 Yards * 50 Yards	Series 3200 / Series 3210 Series 3220 / Series 3270 Series 3310	Eco-Solvent / Solvent UV / Latex Certified for HP Latex Inks
Smooth Walls / Compound Curves Deep Channels / Concave Surfaces Corrugated Panels Fleet Panels (Flat with Rivets)	7 Years	30" / 54" / 60"	25 Yards * 50 Yards	Series 3200 / Series 3210 Series 3220 / Series 3270 Series 3310	Eco-Solvent / Solvent UV / Latex Certified for HP Latex Inks
Glass / Common Sign Substrates Smooth Walls / Soft Curves Fleet Panels (Flat without Rivets)	7 Years ✦	30" / 54" / 60"	50 Yards	Series 3210 / Series 3220 Series 3310 / Series 3420	Eco-Solvent / Solvent UV / Latex Certified for HP Latex Inks
Brick, Concrete & Stucco Textured Surfaces & Substrates Smooth Walls ABS Plastics	7 Years ▲	30" / 48" 54" / 60"	50 Yards	Series 3210 / Series 3220 Series 3420 ProTec Series 3960	Eco-Solvent / Solvent UV / Latex Certified for HP Latex Inks
Smooth and Textured Surfaces & Substrates Brick, Concrete & Stucco Low Surface Energy Substrates	7 Years ▲	30" / 48" 54" / 60"	50 Yards	Series 3210 / Series 3220 Series 3420 ProTec Series 3960	Eco-Solvent / Solvent UV / Latex Certified for HP Latex Inks

* Only available in 54" width ✦ 7 year durability applies when paired with an Arlon cast overlaminate ▲ See PIB for warranty exclusions

WRAPITRIGHT®

INSTRUCTIONAL VIDEO LIBRARY



WATCH THE VIDEO ▶

Uploading an Arlon Media Profile Into HP 300 Series Printers

Learn step-by-step instructions on how to properly upload Arlon Media Profiles into HP 300 RIP software.

For more videos, visit wrapitright.com

PRO  TIPS

FOR MAXIMUM Shelf Life

Problems like mottling, curling, and inconsistencies in release liners can be avoided by storing film at recommended temperatures.

Excess humidity and heat can greatly affect a film's shelf life—so keep your rolls both cool and dry!

Walls Reimagined

Transform ordinary walls into personalized art tailored to each individual customer.



Wrapped in DPF 5200

	DESCRIPTION	FACE FILM THICKNESS	ADHESIVE	RELEASE LINER	FINISH	DURABILITY (UNPRINTED)
DPF 5200	Printable Etched Glass Cast Film	2-Mil (50 Micron)	Permanent (Clear)	Lay-Flat Synthetic	Etched Glass Silver Etched Glass Sparkle Etched Glass	7 Years
DPF 6000RP WHITE	Premium Multi-Purpose Cast Film	2-Mil (50 Micron)	Clean Removing, Repositionable (Light Gray)	Lay-Flat Polycoated	Gloss	7 Years
DPF 4600LX	High Performance Multi-Purpose Film with Low Profile X-Scape Technology™	3.2-Mil (80 Micron)	Repositionable (Light Gray)	Lay-Flat Polycoated with Low Profile X-Scape Technology™	Gloss	7 Years *
DPF 4300	Intermediate Calendered Multi-Purpose Removable Film	3.4-Mil (86 Micron)	Removable (Clear)	Lay-Flat Polycoated	Matte	4 Years
DPF 206	Removable Coated Wall Fabric	6-Mil (150 Micron)	Removable (Clear)	Lay-Flat Polycoated	Matte	1 Year
DPF 207	Removable Wall Decoration Film	6-Mil (150 Micron)	Removable (Clear)	Lay-Flat Polycoated	Matte	1 Year



Wrapped in DPF 4300 by Majer Signs Inc

APPLICATIONS	RECOMMENDED SURFACES	ROLL WIDTHS	ROLL LENGTHS	COMPATIBLE OVERLAMINATE	INK COMPATIBILITY
Window Graphics (Interior, Exterior) Glass & Clear Substrates Partition Graphics	Glass Clear Substrates	24" / 30" 48" / 60"	10 Yards ✦ 50 Yards	N/A	Eco-Solvent / Solvent UV / Latex
Wall Graphics (Interior, Exterior) Multi-Purpose Commercial Vehicle Graphics (Full, Partial) Vehicle Decals Fleet Graphics	Smooth Walls / Compound Curves Fleet Panels (Flat with Rivets) Deep Channels / Concave Surfaces Corrugated Panels	30" / 54" / 60"	25 Yards ▲ 50 Yards	Series 3200 / Series 3210 Series 3220 / Series 3270 Series 3310	Eco-Solvent / Solvent UV / Latex Certified for HP Latex Inks
Wall Graphics (Interior) Window Graphics Multi-Purpose Commercial Vehicle Graphics (Partial) Vehicle Decals Fleet Graphics	Smooth Walls Glass Common Sign Substrates Soft Curves Fleet Panels (Flat without Rivets)	30" / 54" / 60"	50 Yards	Series 3210 / Series 3220 Series 3310 / Series 3420	Eco-Solvent / Solvent UV / Latex Certified for HP Latex Inks
Wall Graphics (Interior) Vehicle Decals Window Graphics	Painted Smooth Walls Glass	54"	50 Yards	Series 3200 / Series 3210 Series 3220 / Series 3420	Eco-Solvent / Solvent UV / Latex
Indoor Advertising Wall Graphics (Interior) Home Décor	Common Sign Substrates Smooth Walls	54"	100 Feet	N/A	Eco-Solvent / Solvent UV
Indoor Advertising Wall Graphics (Interior) Home Décor	Common Sign Substrates Smooth Walls	54"	50 Yards	N/A	Eco-Solvent / Solvent UV

* 7 year durability applies when paired with an Arlon cast overlaminate ✦ Only available in 48" width ▲ Only available in 54" width

WRAPITRIGHT®

INSTRUCTIONAL VIDEO LIBRARY



WATCH THE VIDEO ▶

Wet Application of a Window Graphic

Using a wet application can help make your project picture perfect. This video demonstrates how to correctly install window graphics with a wet application.

For more videos, visit wrapitright.com

PRO  TIPS

SEAM OVERLAPS

The preferred seam overlap is 1/2"-1" when installing interior walls.

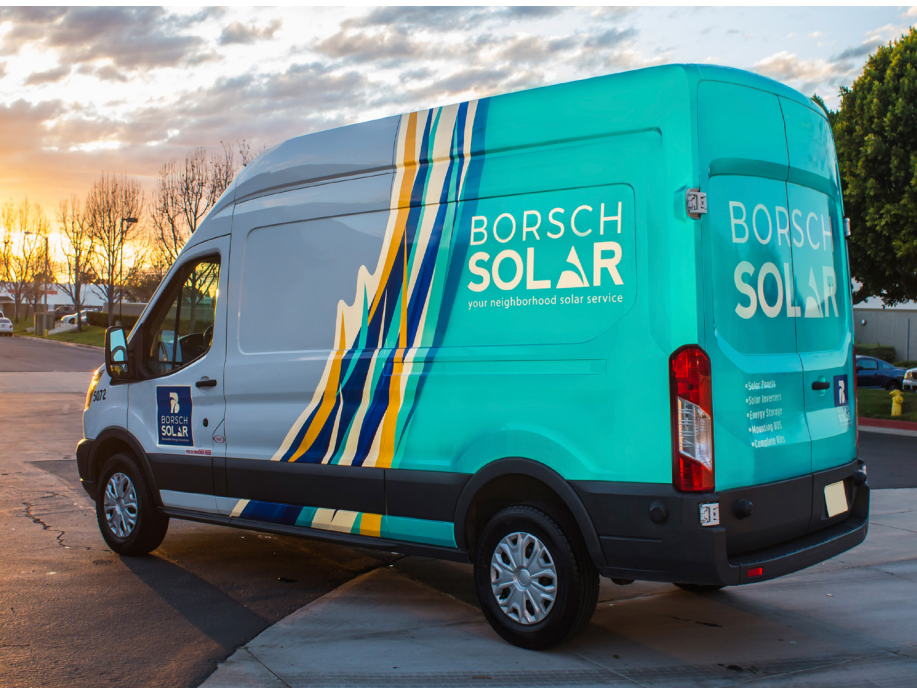
Heavy Duty Digital

Whether your graphics are going cross country, transatlantic or just across town, you will need a film to withstand the extremes.



Wrapped in DPF 9000

	DESCRIPTION	FACE FILM THICKNESS	ADHESIVE	RELEASE LINER	FINISH	APPLICATIONS
ILLUMINITE WRAP™	Fleet Grade * Reflective Film with Low Profile FLITE Technology™	5-Mil (125 Micron)	Clean Removing, Repositionable (Light Gray)	Lay-Flat Polycoated with Low Profile FLITE Technology™	Gloss	Vehicle Graphics (Full, Partial) Vehicle Decals Fleet Graphics Fleet Markings
DPF 2400	Fleet Grade * Reflective Film	5-Mil (125 Micron)	Permanent (Clear)	Lay-Flat Polycoated	Gloss	Fleet Markings Fleet Graphics Vehicle Decals Vehicle Graphics (Partial)
DPF 4000	Industrial Grade Calendered Film	3.5-Mil (90 Micron)	Permanent (Clear)	Lay-Flat Polycoated	Satin	Rail & Ocean Container Markings Fleet Markings
DPF 8000™ ULTRA TACK	Industrial Grade Multi-Purpose Calendered Film for Hard-to-Stick Surfaces	3.5-Mil (90 Micron)	Permanent, Ultra Tack (Clear)	Lay-Flat Polycoated	Satin	Building Wraps Wall Graphics (Exterior) ABS Plastic Graphics
DPF 9000	Industrial Grade Heat & Solvent Resistant Calendered Film	3.5-Mil (90 Micron)	Heat, Solvent Resistant Permanent (Clear)	Lay-Flat Polycoated	Satin	Gasoline Pumps Fleet Markings Boat Decals



Wrapped in IllumiNITE Wrap™ with Series 3220 Overlaminate by High Tech Vinyl Installations



Wrapped in DPF 4000

RECOMMENDED SURFACES	DURABILITY (UNPRINTED)	ROLL WIDTHS	ROLL LENGTHS	COMPATIBLE OVERLAMINATE	INK COMPATIBILITY
Smooth, Flat Panels / Compound Curves Moderate Channels / Soft Curves Concave Surfaces / Corrugated Panels Fleet Panels (Flat with Rivets)	7 Years	48"	10 Yards 25 Yards 50 Yards	Series 3210 Series 3220 Series 3200	Eco-Solvent / Solvent UV / Latex Certified for HP Latex Inks
Smooth, Flat Panels / Compound Curves Moderate Channels / Soft Curves Fleet Panels (Flat with Rivets)	7 Years	48"	10 Yards 25 Yards 50 Yards	Series 3210 Series 3220 Series 3200	Eco-Solvent / Solvent
Corrugated Panels Fleet Panels (Flat without Rivets)	7 Years	30" / 48" 54" / 60"	50 Yards	Series 3220 / Series 3420	Eco-Solvent / Solvent UV / Latex
Brick, Concrete & Stucco Textured Surfaces & Substrates Smooth Walls ABS Plastics	7 Years ✦	30" / 48" 54" / 60"	50 Yards	Series 3210 / Series 3220 Series 3420 ProTec Series 3960	Eco-Solvent / Solvent UV / Latex Certified for HP Latex Inks
Corrugated Panels Fleet Panels (Flat without Rivets)	7 Years	30" / 48" 54" / 60"	50 Yards	Series 3220 / Series 3420	Eco-Solvent / Solvent UV / Latex

* Fleet Grade exceeds engineering standards ✦ See PIB for warranty exclusions

WRAPITRIGHT®

INSTRUCTIONAL VIDEO LIBRARY

WATCH THE VIDEO ▶

Preventing Adhesive Build-Up

Adhesive build-up can collect in a printer when printing film that has a soft and aggressive adhesive system. Learn how to remove adhesive build-up on your wide format printer.

For more videos, visit wrapitright.com

PRO TIPS

BEFORE YOU Laminate

Always wipe down you media before you laminate. This will ensure that no dust or dirt particles are sealed in.

Flat Out Impressive

Low cost solutions can still turn heads and these films are designed to do just that for your everyday promotional graphics.



DPF 50WD Clear

	DESCRIPTION	FACE FILM THICKNESS	ADHESIVE	OPACITY	RELEASE LINER	APPLICATIONS
DPF 510G/M DPF 510GT/MT	Promotional Calendered Permanent Film	3.2-Mil (80 Micron)	DPF 510G/M: Permanent (Clear) DPF 510GT/MT: Permanent (Light Gray)	N/A	Lay-Flat Polycoated	Standard Signage (Permanent) Display Graphics
DPF 510GTR/MTR	Promotional Calendered Removable Film	3.2-Mil (80 Micron)	Removable, Low Tack (Light Gray)	N/A	Lay-Flat Polycoated	Standard Signage (Removable) Display Graphics Window Graphics
DPF 510GT-HT	Promotional Calendered Permanent Film	3.2-Mil (80 Micron)	Permanent, High Tack (Light Gray)	N/A	Lay-Flat Polycoated	Standard Signage (Permanent) Display Graphics
DPF 50WD WHITE/CLEAR	Removable Window Film	DPF 50WD White: 3.5-Mil (90 Micron) DPF 50WD Clear: 4-Mil (100 Micron)	Removable (Clear)	N/A	Lay-Flat Polycoated	Window Decals Changeable Signage
DPF 208	Eco Roll-Up Polypropylene	8-Mil (200 Micron)	N/A	80%	N/A	Indoor Advertising Roll-Up Displays Pop-Up Displays
DPF 210 DPF 210PB	Roll-Up Xtreme Polyester	9.8-Mil (250 Micron)	N/A	90%	N/A	Indoor Advertising Roll-Up Displays Pop-Up Displays
DPF 215	Pop-Up Polyester	14.5-Mil (370 Micron)	N/A	90%	N/A	Indoor Advertising Pop-Up Displays



Wrapped in DPF 510GT-HT

RECOMMENDED SURFACES	FINISH	DURABILITY (UNPRINTED)	ROLL WIDTHS	ROLL LENGTHS	COMPATIBLE OVERLAMINATE	INK COMPATIBILITY
Common Sign Substrates	Gloss Matte	3 Years	30" * / 54" / 60"	50 Yards	Series 3510	Eco-Solvent / Solvent / Latex
Common Sign Substrates Glass	Gloss Matte	3 Years	54" / 60"	50 Yards	Series 3510	Eco-Solvent / Solvent / Latex
Common Sign Substrates	Gloss	3 Years	54" / 60"	50 Yards	Series 3510	Eco-Solvent / Solvent / Latex
Glass High Energy Surfaces	DPF 50WD White: Matte DPF 50WD Clear: Gloss	DPF 50WD White: 2 Years DPF 50WD Clear: 1 Year	54" / 60"	50 Yards	Series 3200 / Series 3420	Eco-Solvent / Solvent UV / Latex ✦
N/A	Satin	1 Year	36" / 50"	98 Feet	N/A	Eco-Solvent / Solvent
N/A	Satin Pebble	1 Year	36" / 50" / 60" ▲	98 Feet 164 Feet	N/A	Eco-Solvent / Solvent
N/A	Satin	1 Year	36"	98'	N/A	Eco-Solvent / Solvent

🌱 Environmentally Friendly * Only available in 30" width for DPF 510GT ✦ Not compatible with DPF 50WD Clear ▲ Only 60" width available in Satin finish



WATCH THE VIDEO ▶

How to Store Vinyl Rolls

By storing your vinyl properly, you'll always get the best performance from your media. This video shows the key elements to storing vinyl in the right environment.

For more videos, visit wrapitright.com



SQUEEGEE BASICS 101

Harder squeegees (made from Teflon) are better at fixing sharper wrinkles, while softer squeegees (made from felt) can help fix wrinkles in curved panels.

Low Cost, High Potential

Make a big picture statement with our range of banner material. Block out the competition but not your creativity. Seeing is believing!



DPF 310BB

	DESCRIPTION	FACE FILM THICKNESS	YARN	OPACITY	FINISH	APPLICATIONS
DPF 313 (500D)	Front-Lit Smooth Promotional Banner	13-oz	500D	97%	Gloss Matte	Indoor & Outdoor Advertising Billboard Banners
DPF 313 (1000D)	Front-Lit Smooth Promotional Banner	13-oz	1000D	97%	Gloss Matte	Indoor & Outdoor Advertising Billboard Banners
DPF 303	Super Smooth Double-Sided Blockout Banner	13-oz	250D	100%	Satin	Display Graphics
DPF 310BB *	Front-Lit Black Back Lightweight Banner	9-oz	1000D	100%	Matte	Outdoor Advertising Billboard Banners
DPF 315	Economical Double-Sided Blockout Banner	15-oz	500D	100%	Gloss Matte ✦	Indoor & Outdoor Advertising Billboard Banners Indoor Hanging Graphics
DPF 318	Intermediate Double-Sided Blockout Banner	18-oz	1000D	100%	Gloss Matte ✦	Indoor & Outdoor Advertising Flag Pole Banners



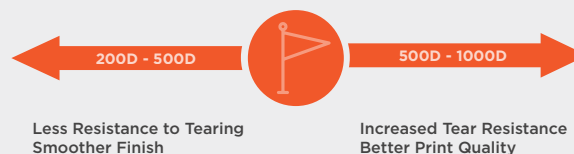
DPF 313 (500D)

DURABILITY (UNPRINTED)	ROLL WIDTHS ▲	ROLL LENGTHS ▲	INK COMPATIBILITY
1 Year	38" / 54"	40 Yards	Eco-Solvent / Solvent UV / Latex
1 Year	30" ♦ / 38" / 48" ♦ 54" / 63"	40 Yards 50 Yards	Eco-Solvent / Solvent UV / Latex Certified for HP Latex Inks
1 Year	38" / 54" / 62"	50 Yards	Eco-Solvent / Solvent UV / Latex
1 Year	126" / 196"	164 Feet	Eco-Solvent / Solvent / UV
1 Year	38" / 54" / 62"	50 Yards	Eco-Solvent / Solvent UV / Latex
1 Year	38" / 54"	50 Yards	Eco-Solvent / Solvent UV / Latex

* DPF 310BB is available by custom order ♦ Double-sided printing recommended on Matte ▲ Custom widths and lengths available by custom order ♦ Only available in 40 yard length

Yarn Denier Explained

The strength of a scrim banner is determined by the denier. The denier is the thickness of the thread; the higher the denier, the stronger the banner. 1000 Denier (1000D) banner means that a single thread has been twisted 1000 times to the finished length of an inch (think: string vs rope).



WRAPITRIGHT®

INSTRUCTIONAL VIDEO LIBRARY



WATCH THE VIDEO ▶

Uploading an Arlon Media Profile into Roland Versaworks

Learn step-by-step instructions on how to properly upload Arlon Media Profiles into Roland VersaWorks RIP software.

For more videos, visit wrapitright.com

PRO  TIPS

DOUBLE THE Exposure

Printing on the front and back of block out banner gives your business the distinct advantage—maximum visibility and added durability.



Wrapped in DPF 6700 with Series 3220 Overlaminate by
OFF THE WALL Signs and Graphics

Multiply Your Protection

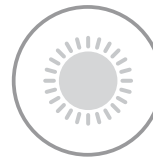
Shield and protect your everyday signage from the elements. Arlon overlaminates are designed to protect and prolong the life of your graphic.



**Prolonged
Durability**



**Ease of
Application**



**UV
Stability**



**Abrasion
Resistance**



**Quick and
Clean Removal**



Wrapped in DPF 6700 with Series 3220 Overlaminate by Signs Now Broward



Wrapped in SLX™ Cast Wrap with Series 3270 Overlaminate by Blurred Sign Co.

	DESCRIPTION	FACE FILM THICKNESS	ADHESIVE	RELEASE LINER	FINISH	DURABILITY	ROLL WIDTHS	ROLL LENGTHS	COMPATIBLE VINYL
SERIES 3270	Premium Cast Overlaminate	2-Mil (50 Micron)	Permanent (Clear)	Clay Coated	Gloss Matte Satin	7 Years	30" / 48" 54" / 60"	25 Yards ✚ 50 Yards	SLX™ Cast Wrap / DPF 6100XLP / DPF 6000XRP DPF 6000RP White
SERIES 3220	Premium Cast Overlaminate	2-Mil (50 Micron)	Permanent (Clear)	Clay Coated	Gloss Matte Satin Luster	7 Years	30" / 48" 54" / 60"	25 Yards ✚ 50 Yards	DPF 6100XLP / DPF 6000XRP / DPF 6000RP White DPF 6500 / DPF 6700 / DPF 4600LX / DPF 4500GT/MT DPF 8000™ Ultra Tack / DPF 9000 / DPF 4000 DPF 4300 / DPF 2400 / SLX™ Cast Wrap IllumiNITE Wrap™ / SLX™ Cast Wrap
SERIES 3210	Premium Cast Overlaminate	1.3-Mil (35 Micron)	Permanent (Clear)	Clay Coated	Gloss	7 Years	48" / 54" / 60"	25 Yards ✚ 50 Yards	DPF 6100XLP / DPF 6000XRP / DPF 6000RP White DPF 6500 / DPF 6700 / DPF 4600LX DPF 4500GT/MT/ DPF 4500G White / DPF 4500GX DPF 4500GLX/MLX / DPF 8000™ Ultra Tack DPF 4300 / DPF 2400 / SLX™ Cast Wrap IllumiNITE Wrap™
SERIES 3310 🌱	Extended Life Polyurethane Overlaminate	1.5-Mil (38 Micron)	Permanent (Clear)	Clay Coated	Gloss	10 Years *	54" / 60"	50 Yards	Most Digital and Screen Print Films
SERIES 3420	Calendered Overlaminate	3-Mil (75 Micron)	Permanent (Clear)	Clay Coated	Gloss Matte Satin	5 Years	30" / 48" 54" / 60"	50 Yards	DPF 4600LX / DPF 4500G White / DPF 4500GLX/MLX DPF 4500GX / DPF 4500GT/MT / DPF 4300 DPF 8200 High Tack DPF 8000™ Ultra Tack
SERIES 3510	Promotional Calendered Overlaminate	3.2-Mil (80 Micron)	Permanent (Clear)	Polycoated Kraft	Gloss Matte	3 Years	54" / 60"	50 Yards	DPF 510G/M / DPF 510GT/MT DPF 510GTR/MTR / DPF 510GT-HT

🌱 Environmentally Friendly * 10 years vertical exposure and up to 4 years horizontal exposure ✚ Only available in Gloss for 54" width

Clear Solutions

Tough situations require tough solutions. When a standard overlaminate won't do, take your protection up a notch. Protect your graphics from extreme wear and tear while ensuring crystal clear clarity.



Wrapped in DPF 4500GT with Series 3350 Overlaminate



**Extreme
Durability**



**Anti-Graffiti
Protection**



**Temperature
& Chemical
Resistance**



**Abrasion
Resistance**



Clarity



Wrapped in IllumiNITE Wrap™ with Series 3200 Overlamine by Graffit Design



Wrapped in DPF 8000™ Ultra Tack with ProTec Series 3960 Overlamine by DSW Graphic

	DESCRIPTION	FACE FILM THICKNESS	ADHESIVE	RELEASE LINER	FINISH	DURABILITY	ROLL WIDTHS	ROLL LENGTHS	COMPATIBLE VINYL
SERIES 3200	Premium High Gloss Optically Clear Overlamine	2-Mil (50 Micron)	Permanent (Clear)	Lay-Flat Synthetic	Gloss	7 Years	30" / 54" / 60"	10 Yards 100 Feet * 50 Yards	DPF 6100XLP / DPF 6000XRP / DPF 6000RP White/Clear DPF 6500 / DPF 6700 / DPF 4500G Clear / DPF 2400 IllumiNITE Wrap™ / DPF 45WF / DPF 47WF DPF 50WD White/Clear
SERIES 3350	Anti-Graffiti PVDF Overlamine	2-Mil (50 Micron)	Permanent (Clear)	Lay-Flat Polycoated	Satin	10 Years	48" / 54"	50 Yards	Most Digital and Screen Print Films
PROTEC SERIES 3960	Heavy Duty Calendered Overlamine	12-Mil (305 Micron)	Permanent (Clear)	Lay-Flat Synthetic	Gloss	2 Years	54"	10 Yards 25 Yards	DPF 8000™ Ultra Tack / DPF 8200 High Tack

* Only available in 54" width

