



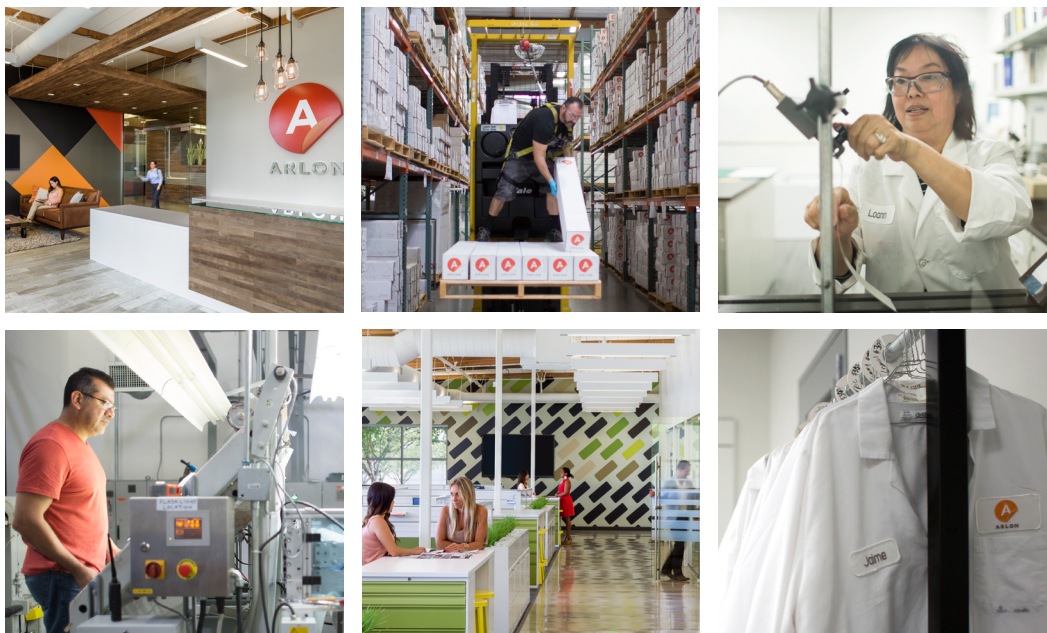
Wrapped in SLX™ Cast Wrap by Shore Wraps



ARLON

PRINT MEDIA PRODUCTS





## Your Partner of Choice

Arlon, established in 1958 near Los Angeles, California, is a leading global manufacturer of pressure-sensitive adhesive vinyls for the sign and graphics industry.

As one of the world's most experienced casting companies, Arlon has gained a worldwide reputation for quality and innovation.

Arlon is proudly ISO 9001:2015 certified.



### TECHNICAL SERVICES:

- Toll Free: 1 877 ARLON98 / 1 877 275 6698
- GraphicsTechnicalSupport@arlon.com

### CUSTOMER SERVICE:

- 1 800 232 7161 / 714 985 6300
- GraphicsOrders@arlon.com



## WRAPITRIGHT.COM

WrapItRight.com gives you access to expert advice and tutorials from industry leaders and specialists!

- How-to video library featuring vehicle wraps, commercial signage, and digital printing techniques.
- Create custom playlists and watch videos later.
- Get updates on Trade Shows and Training Events.

Throughout this brochure you will see companion how-to videos featuring recommended methods and techniques. Videos can be accessed by using the QR code or visiting [wrapitright.com](http://wrapitright.com).

## Arlon Technology

**FLITE™**  
TECHNOLOGY

**FLITE Technology™:** Arlon's brand name for our lite contact system which allows graphics to float over a substrate until firm pressure is applied. FLITE Technology™ guarantees the fastest install while ensuring long-term bond and clean removability.

**X-Scape™**  
TECHNOLOGY

**X-Scape Technology™:** Arlon's brand name for our air-egress technology which allows air to release through tiny channels in the adhesive backed vinyl used for fleet, vehicle and general signage applications. X-Scape Technology™ allows installers to achieve a speedy installation while maintaining a high enough tack to ensure long-term bond.

## Table of Contents

Fleet & Vehicle Graphics .....	<b>2</b>
Exterior Building & Wall Wraps .....	<b>4</b>
Commercial & Backlit Signage .....	<b>6</b>
Multi-Purpose .....	<b>8</b>
Interior Décor .....	<b>10</b>
Industrial .....	<b>12</b>
Promotional .....	<b>14</b>
Promotional Banner .....	<b>16</b>
Overlaminates .....	<b>18</b>
Specialty Overlaminates .....	<b>20</b>

# Your Ideas in Motion

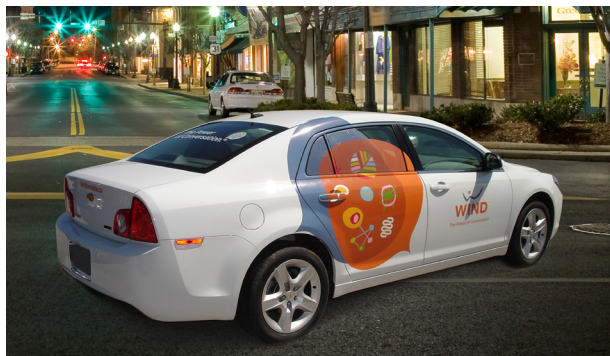
From start to finish, consistent print quality, ease of application, and versatility will keep your business moving no matter how many vehicles you're wrapping.



Wrapped in SLX™ Cast Wrap with Series 3270 Overlaminate by Jack of All Trades

	DESCRIPTION	FACE FILM THICKNESS	ADHESIVE	RELEASE LINER	FINISH	APPLICATIONS
<b>SLX™ CAST WRAP</b>	Premium Cast Film with Low Profile FLITE Technology™	2-Mil (50 Micron)	Clean Removing, Repositionable (Light Gray)	Lay-Flat Polycoated with Low Profile FLITE Technology™	Gloss	Vehicle Graphics (Full, Partial) Vehicle Decals Fleet Graphics
<b>DPF 6100XLP</b>	Premium Cast Film with Low Profile X-Scape Technology™	2-Mil (50 Micron)	Clean Removing, Repositionable (Light Gray)	Lay-Flat Polycoated with Low Profile X-Scape Technology™	Gloss	Vehicle Graphics (Full, Partial) Vehicle Decals Fleet Graphics
<b>DPF 6000XRP</b>	Premium Multi-Purpose Cast Film with X-Scape Technology™	2-Mil (50 Micron)	Clean Removing, Repositionable (Light Gray)	Lay-Flat Polycoated with X-Scape Technology™	Gloss	Vehicle Graphics (Full, Partial) Vehicle Decals Fleet Graphics Multi-Purpose Commercial Wall Graphics (Interior, Exterior)
<b>DPF 6000RP WHITE</b>	Premium Multi-Purpose Cast Film	2-Mil (50 Micron)	Clean Removing, Repositionable (Light Gray)	Lay-Flat Polycoated	Gloss	Vehicle Graphics (Full, Partial) Vehicle Decals Fleet Graphics Multi-Purpose Commercial Wall Graphics (Interior, Exterior)
<b>DPF 4600LX</b>	High Performance Multi-Purpose Film with Low Profile X-Scape Technology™	3.2-Mil (80 Micron)	Clean Removing, Repositionable (Light Gray)	Lay-Flat Polycoated with Low Profile X-Scape Technology™	Gloss	Vehicle Graphics (Partial) Vehicle Decals Fleet Graphics Window Graphics Multi-Purpose Commercial Wall Graphics (Interior)
<b>ILLUMINITE WRAP™</b>	Fleet Grade * Reflective Film with Low Profile FLITE Technology™	5-Mil (125 Micron)	Clean Removing, Repositionable (Light Gray)	Lay-Flat Polycoated with Low Profile FLITE Technology™	Gloss	Vehicle Graphics (Full, Partial) Vehicle Decals Fleet Graphics Fleet Markings
<b>DPF 2400</b>	Fleet Grade * Reflective Film	5-Mil (125 Micron)	Permanent (Clear)	Lay-Flat Polycoated	Gloss	Vehicle Graphics (Full, Partial) Vehicle Decals Fleet Graphics Fleet Markings
<b>DPF 45WF</b>	One-Way Vision Window Film 60/40 Perforated Pattern	6-Mil (150 Micron)	Clean Removing, Low Tack (Clear)	Lay-Flat Polycoated	Satin	Window Graphics





Wrapped in IllumiNITE Wrap™ with Series 3220 Overlaminate by High Tech Vinyl Installations

Wrapped in DPF 4600LX

RECOMMENDED SURFACES	DURABILITY (UNPRINTED)	ROLL WIDTHS	ROLL LENGTHS	COMPATIBLE OVERLAMINATE	INK COMPATIBILITY
Compound Curves / Deep Channels Concave Surfaces / Corrugated Panels Fleet Panels (Flat with Rivets)	7 Years	30" / 48" 54" / 60"	50 Yards	Series 3270	Eco-Solvent / Solvent UV / Latex <a href="#">Certified for HP Latex Inks</a>
Compound Curves / Deep Channels Concave Surfaces / Corrugated Panels Fleet Panels (Flat with Rivets)	7 Years	30" / 48" 54" / 60"	50 Yards	Series 3200 / Series 3210 Series 3220 / Series 3270 Series 3310	Eco-Solvent / Solvent UV / Latex <a href="#">Certified for HP Latex Inks</a>
Compound Curves / Deep Channels Concave Surfaces / Corrugated Panels Fleet Panels (Flat with Rivets) Smooth Walls	7 Years	30" / 48" 54" / 60"	20 Yards ♣ 50 Yards	Series 3200 / Series 3210 Series 3220 / Series 3270 Series 3310	Eco-Solvent / Solvent UV / Latex <a href="#">Certified for HP Latex Inks</a>
Compound Curves / Deep Channels Concave Surfaces / Corrugated Panels Fleet Panels (Flat with Rivets) Smooth Walls	7 Years	30" / 48" 54" / 60"	20 Yards ♣ 50 Yards	Series 3200 / Series 3210 Series 3220 / Series 3270 Series 3310	Eco-Solvent / Solvent UV / Latex <a href="#">Certified for HP Latex Inks</a>
Soft Curves Fleet Panels (Flat without Rivets) Common Sign Substrates Smooth Walls Glass	5 Years	30" / 54" / 60"	50 Yards	Series 3210 / Series 3220 Series 3310 / Series 3420	Eco-Solvent / Solvent UV / Latex <a href="#">Certified for HP Latex Inks</a>
Smooth, Flat Panels / Compound Curves Moderate Channels / Soft Curves Concave Surfaces / Corrugated Panels Fleet Panels (Flat with Rivets)	7 Years	48"	10 Yards 25 Yards 50 Yards	Series 3200 Series 3210 Series 3220	Eco-Solvent / Solvent UV / Latex <a href="#">Certified for HP Latex Inks</a>
Compound Curves / Deep Channels Concave Surfaces / Corrugated Panels Fleet Panels (Flat with Rivets)	7 Years	48"	10 Yards 25 Yards 50 Yards	Series 3200 Series 3210 Series 3220	Eco-Solvent / Solvent
Glass	1 Year	54" / 60"	164 Feet	Series 3200	Eco-Solvent / Solvent UV / Latex ▲

\* Fleet Grade exceeds engineering standards ♣ Only available in 54" width ▲ Optimal printing on HP Latex 360



#### WATCH THE VIDEO ▶

#### Applying Vinyl into a Deep Channel

Many commercial wraps include difficult applications over and around deep channels. This video shows the ideal technique for installing film into channels.

For more videos, visit [wrapitright.com](http://wrapitright.com)

**FLITE**<sup>TM</sup>  
TECHNOLOGY

FLITE Technology<sup>TM</sup> is Arlon's lite contact system which allows graphics to float over a substrate until firm pressure is applied. FLITE Technology guarantees the fastest install while ensuring long-term bond and clean removability.

[arlon.com/technology](http://arlon.com/technology)

**Certified for  
HP Latex Inks**

SLX<sup>TM</sup> Cast Wrap  
DPF 6100XLP  
DPF 6000XRP  
DPF 6000RP White  
DPF 4600LX  
IllumiNITE Wrap<sup>TM</sup>

# Surfaces are not Equal

Transform hard-to-stick brick, concrete and stucco into larger than life graphics.  
From the window to the walls, no surface is left untouched.



Wrapped in DPF 8000™ Ultra Tack by Industry Graphics

	DESCRIPTION	FACE FILM THICKNESS	ADHESIVE	RELEASE LINER	FINISH	APPLICATIONS
<b>DPF 6700</b>	Premium Cast Wall Wrap Film	2-Mil (50 Micron)	Permanent (Clear)	Lay-Flat Polycoated	Gloss	Building Wraps Wall Graphics (Interior, Exterior)
<b>DPF 8000™ ULTRA TACK</b>	Industrial Grade Multi-Purpose Calendered Film for Hard-to-Stick Surfaces	3.5-Mil (90 Micron)	Permanent, Ultra Tack (Clear)	Lay-Flat Polycoated	Satin	Building Wraps Wall Graphics (Exterior) ABS Plastic Graphics
<b>DPF 8200 HIGH TACK</b>	Industrial Grade Multi-Purpose Calendered Film for Exterior Wall and Low Surface Energy Substrates	3.5-Mil (90 Micron)	Permanent, High Tack (Clear)	Lay-Flat Polycoated	Satin	Building Wraps Wall Graphics (Exterior) Low Surface Energy Substrates
<b>DPF 47WF</b>	One-Way Vision Window Film 70/30 Perforated Pattern	6-Mil (150 Micron)	Clean Removing, Low Tack (Clear)	Lay-Flat Polycoated	Satin	Window Graphics





Wrapped in DPF 8200 High Tack



Wrapped in DPF 47WF with Series 3200 Overlaminate by Bluemedia



## WRAPITRIGHT®

INSTRUCTIONAL VIDEO LIBRARY

**WATCH THE VIDEO ▶**

### Tiling for Large Wall Graphics

Successful installations of large wall graphics are dependent upon preparation and good design practices. This video will show you how to prepare a graphic for installation.

For more videos, visit [wrapitright.com](http://wrapitright.com)

## PRO TIPS

# test your SURFACES!

"Plan for success! Always test the compatibility of your substrate and application surface with your vinyl."

*Arlon Technical Services*

**Certified for  
HP Latex Inks**

DPF 6700  
DPF 8000™ Ultra Tack  
DPF 8200 High Tack

RECOMMENDED SURFACES	DURABILITY (UNPRINTED)	ROLL WIDTHS	ROLL LENGTHS	COMPATIBLE OVERLAMINATE	INK COMPATIBILITY
Brick, Concrete & Stucco Textured Surfaces & Substrates	7 Years *	30" / 48" 54" / 60"	50 Yards	Series 3200 / Series 3210 Series 3220	Eco-Solvent / Solvent UV / Latex <a href="#">Certified for HP Latex Inks</a>
Brick, Concrete & Stucco Textured Surfaces & Substrates Smooth Walls ABS Plastics	7 Years *	30" / 49" 54" / 60"	50 Yards	Series 3210 / Series 3220 Series 3420 / Series 3590	Eco-Solvent / Solvent UV / Latex <a href="#">Certified for HP Latex Inks</a>
Smooth and Textured Surfaces & Substrates Brick, Concrete & Stucco Low Surface Energy Substrates	7 Years *	30" / 49" 54" / 60"	50 Yards	Series 3210 / Series 3220 Series 3420 / Series 3590	Eco-Solvent / Solvent UV / Latex <a href="#">Certified for HP Latex Inks</a>
Glass	1 Year	54" / 60"	164 Feet	Series 3200	Eco-Solvent / Solvent UV / Latex ♣

\* See PIB for warranty exclusions ♣ Optimal printing on HP Latex 360

# Make an Impact

Don't let your signage get lost in the crowd. Choosing a film with both flexibility and vibrant print quality will give you the visibility you need for your graphics to perform everyday.

	DESCRIPTION	FACE FILM THICKNESS	ADHESIVE	RELEASE LINER	FINISH	APPLICATIONS
<b>DPF 4600LX</b>	High Performance Multi-Purpose Film with Low Profile X-Scape Technology™	3.2-Mil (80 Micron)	Repositionable (Light Gray)	Lay-Flat Polycoated with Low Profile X-Scape Technology™	Gloss	Multi-Purpose Commercial Wall Graphics (Interior) Vehicle Graphics (Partial) Vehicle Decals Fleet Graphics Window Graphics
<b>DPF 4500GLX/MLX</b>	Intermediate Calendered Film with Low Profile X-Scape Technology™	3-Mil (75 Micron)	Permanent (Light Gray)	Lay-Flat Polycoated with Low Profile X-Scape Technology™	Gloss Matte	Standard Signage (Permanent) Display Graphics
<b>DPF 4500GX</b>	Intermediate Calendered Film with Low Profile X-Scape Technology™	3-Mil (75 Micron)	Permanent (Clear)	Lay-Flat Polycoated with Low Profile X-Scape Technology™	Gloss	Standard Signage (Permanent) Display Graphics Window Graphics
<b>DPF 4500GT/MT</b>	Intermediate Calendered Film	3-Mil (75 Micron)	Permanent (Light Gray)	Lay-Flat Polycoated	Gloss Matte	Standard Signage (Permanent) Display Graphics
<b>DPF 4500G WHITE/CLEAR</b>	Intermediate Calendered Film	3-Mil (75 Micron)	Permanent (Clear)	Lay-Flat Polycoated	Gloss	Standard Signage (Permanent) Display Graphics Second Surface Signage * Window Graphics *
<b>DPF 6000RP CLEAR</b>	Premium Clear Cast Film	2-Mil (50 Micron)	Permanent (Clear)	Lay-Flat Polycoated	Gloss	Backlit Signage Standard Signage (Permanent) Display Graphics Second Surface Signage Window Graphics Vehicle Graphics (Full, Partial) Fleet Graphics
<b>DPF 6500</b>	Premium Translucent Cast Film	2-Mil (50 Micron)	Permanent (Clear)	Lay-Flat Polycoated	Gloss	Backlit Signage Display Graphics



TL: Wrapped in DPF 4600LX; TR: Wrapped in DPF 6000RP Clear;  
BL: Wrapped in DPF 6500; BR: Wrapped in DPF 4500GT





Wrapped in DPF 4500GLX

RECOMMENDED SURFACES	DURABILITY (UNPRINTED)	ROLL WIDTHS	ROLL LENGTHS	COMPATIBLE OVERLAMINATE	INK COMPATIBILITY
Common Sign Substrates / Glass Smooth Walls / Soft Curves Fleet Panels (Flat without Rivets)	5 Years	30" / 54" / 60"	50 Yards	Series 3210 / Series 3220 Series 3310 / Series 3420	Eco-Solvent / Solvent UV / Latex <a href="#">Certified for HP Latex Inks</a>
Common Sign Substrates Glass	5 Years	30" / 48" ✦ 54" / 60"	50 Yards	Series 3210 / Series 3220 Series 3420	Eco-Solvent / Solvent UV / Latex
Common Sign Substrates Glass	5 Years	30" / 54" / 60"	50 Yards	Series 3210 / Series 3220 Series 3420	Eco-Solvent / Solvent UV / Latex
Common Sign Substrates Glass	5 Years	30" / 48" 54" / 60"	50 Yards	Series 3210 / Series 3220 Series 3420	Eco-Solvent / Solvent UV / Latex
Common Sign Substrates Glass	5 Years	30" / 48" 54" / 60"	50 Yards	DPF 4500G White: Series 3210 Series 3220 / Series 3420 DPF 4500G Clear: Series 3200	Eco-Solvent / Solvent UV / Latex ▲
Glass / Common Sign Substrates Compound Curves / Deep Channels Concave Surfaces / Corrugated Panels Fleet Panels (Flat with Rivets)	7 Years	30" / 48" 54" / 60"	50 Yards	Series 3200	Eco-Solvent / Solvent UV / Latex
Glass / Sign Plexi Common Sign Substrates	7 Years	30" / 48" 54" / 60"	20 Yards ✦ 50 Yards	Series 3200 / Series 3210 Series 3220 / Series 3350	Eco-Solvent / Solvent / UV

\* Use with DPF 4500G Clear ✦ Only available in 48" width for DPF 4500GLX ▲ Not compatible with DPF 4500G Clear ✦ Only available in 54" width

## WRAPITRIGHT®

INSTRUCTIONAL VIDEO LIBRARY



### WATCH THE VIDEO ▶

#### Flat Substrate Application

Laying out large graphics by hand can be difficult to do. This video shows how you can use air-egress vinyl to make these application projects simple and consistent.

For more videos, visit [wrapitright.com](http://wrapitright.com)

**X-Scape™**  
TECHNOLOGY

X-Scape Technology™ is Arlon's air-egress technology which allows air to release through tiny channels in the adhesive backed vinyl used for fleet, vehicle and general signage applications. X-Scape Technology™ allows installers to achieve a speedy installation.

[arlon.com/technology](http://arlon.com/technology)

**Certified for  
HP Latex Inks**

DPF 4600LX

# Freedom of Application

This collection features our most versatile films allowing you to use them for multiple applications while maximizing profitability.



Wrapped in DPF 6000RP White with Series 3220 Satin Overlaminate

	DESCRIPTION	FACE FILM THICKNESS	ADHESIVE	RELEASE LINER	FINISH	APPLICATIONS
<b>DPF 6000XRP</b>	Premium Multi-Purpose Cast Film with X-Scape Technology™	2-Mil (50 Micron)	Clean Removing, Repositionable (Light Gray)	Lay-Flat Polycoated with X-Scape Technology™	Gloss	Multi-Purpose Commercial Wall Graphics (Interior, Exterior) Vehicle Graphics (Full, Partial) Vehicle Decals Fleet Graphics
<b>DPF 6000RP WHITE</b>	Premium Multi-Purpose Cast Film	2-Mil (50 Micron)	Clean Removing, Repositionable (Light Gray)	Lay-Flat Polycoated	Gloss	Multi-Purpose Commercial Wall Graphics (Interior, Exterior) Vehicle Graphics (Full, Partial) Vehicle Decals Fleet Graphics
<b>DPF 4600LX</b>	High Performance Multi-Purpose Film with Low Profile X-Scape Technology™	3.2-Mil (80 Micron)	Repositionable (Light Gray)	Lay-Flat Polycoated with Low Profile X-Scape Technology™	Gloss	Multi-Purpose Commercial Wall Graphics (Interior) Vehicle Graphics (Partial) Vehicle Decals Fleet Graphics Window Graphics
<b>DPF 8000™ ULTRA TACK</b>	Industrial Grade Multi-Purpose Calendered Film for Hard-to-Stick Surfaces	3.5-Mil (90 Micron)	Permanent, Ultra Tack (Clear)	Lay-Flat Polycoated	Satin	Building Wraps Wall Graphics (Exterior) ABS Plastic Graphics
<b>DPF 8200 HIGH TACK</b>	Industrial Grade Multi-Purpose Calendered Film for Exterior Wall and Low Surface Energy Substrates	3.5-Mil (90 Micron)	Permanent, High Tack (Clear)	Lay-Flat Polycoated	Satin	Building Wraps Wall Graphics (Exterior) Low Surface Energy Substrates





Wrapped in DPF 6000RP White with Series 3220 Overlaminates by Graphics Unlimited



Wrapped in DPF 4600LX

RECOMMENDED SURFACES	DURABILITY (UNPRINTED)	ROLL WIDTHS	ROLL LENGTHS	COMPATIBLE OVERLAMINATE	INK COMPATIBILITY
Smooth Walls / Compound Curves Deep Channels / Concave Surfaces Corrugated Panels Fleet Panels (Flat with Rivets)	7 Years	30" / 48" 54" / 60"	20 Yards ♣ 50 Yards	Series 3200 / Series 3210 Series 3220 / Series 3270 Series 3310	Eco-Solvent / Solvent UV / Latex <a href="#">Certified for HP Latex Inks</a>
Smooth Walls / Compound Curves Deep Channels / Concave Surfaces Corrugated Panels Fleet Panels (Flat with Rivets)	7 Years	30" / 48" 54" / 60"	20 Yards ♣ 50 Yards	Series 3200 / Series 3210 Series 3220 / Series 3270 Series 3310	Eco-Solvent / Solvent UV / Latex <a href="#">Certified for HP Latex Inks</a>
Glass / Common Sign Substrates Smooth Walls / Soft Curves Fleet Panels (Flat without Rivets)	5 Years	30" / 54" / 60"	50 Yards	Series 3210 / Series 3220 Series 3310 / Series 3420	Eco-Solvent / Solvent UV / Latex <a href="#">Certified for HP Latex Inks</a>
Brick, Concrete & Stucco Textured Surfaces & Substrates Smooth Walls ABS Plastics	7 Years *	30" / 49" 54" / 60"	50 Yards	Series 3210 / Series 3220 Series 3420 / Series 3590	Eco-Solvent / Solvent UV / Latex <a href="#">Certified for HP Latex Inks</a>
Smooth and Textured Surfaces & Substrates Brick, Concrete & Stucco Low Surface Energy Substrates	7 Years *	30" / 49" 54" / 60"	50 Yards	Series 3210 / Series 3220 Series 3420 / Series 3590	Eco-Solvent / Solvent UV / Latex <a href="#">Certified for HP Latex Inks</a>

\* See PIB for warranty exclusions ♣ Only available in 54" width

## WRAPITRIGHT®

INSTRUCTIONAL VIDEO LIBRARY



### WATCH THE VIDEO ▶

#### Uploading an Arlon Media Profile Into HP 300 Series Printers

Learn step-by-step instructions on how to properly upload Arlon Media Profiles into HP 300 RIP software.

For more videos, visit [wrapitright.com](http://wrapitright.com)



## SHIELD & PROTECT

### GRAPHICS WITH OVERLAMINATES

Pages 18-21

**Certified for  
HP Latex Inks**

DPF 6000XRP  
DPF 6000RP White  
DPF 4600LX  
DPF 8000™ Ultra Tack

# Walls Reimagined

Transform ordinary walls into personalized art tailored to each individual customer.



Wrapped in DPF 206

	DESCRIPTION	FACE FILM THICKNESS	ADHESIVE	RELEASE LINER	FINISH	DURABILITY (UNPRINTED)
DPF 5200	Printable Etched Glass Cast Film	2-Mil (50 Micron)	Permanent (Clear)	Lay-Flat Synthetic	Etched Glass Silver Etched Glass Sparkle Etched Glass	7 Years
DPF 6000RP WHITE	Premium Multi-Purpose Cast Film	2-Mil (50 Micron)	Clean Removing, Repositionable (Light Gray)	Lay-Flat Polycoated	Gloss	7 Years
DPF 4600LX	High Performance Multi-Purpose Film with Low Profile X-Scape Technology™	3.2-Mil (80 Micron)	Repositionable (Light Gray)	Lay-Flat Polycoated with Low Profile X-Scape Technology™	Gloss	5 Years
DPF 4300	Intermediate Calendered Multi-Purpose Removable Film	3.4-Mil (86 Micron)	Removable (Clear)	Lay-Flat Polycoated	Matte	4 Years
DPF 206	Removable Coated Wall Fabric	6-Mil (150 Micron)	Removable (Clear)	Lay-Flat Polycoated	Matte	1 Year
DPF 207	Removable Wall Decoration Film	6-Mil (150 Micron)	Removable (Clear)	Lay-Flat Polycoated	Matte	1 Year





Wrapped in DPF 5200

APPLICATIONS	RECOMMENDED SURFACES	ROLL WIDTHS	ROLL LENGTHS	COMPATIBLE OVERLAMINATE	INK COMPATIBILITY
Window Graphics (Interior, Exterior) Glass & Clear Substrates Partition Graphics	Glass Clear Substrates	24" / 30" 48" / 60"	10 Yards ✦ 50 Yards	N/A	Eco-Solvent / Solvent UV / Latex
Wall Graphics (Interior, Exterior) Multi-Purpose Commercial Vehicle Graphics (Full, Partial) Vehicle Decals Fleet Graphics	Smooth Walls / Compound Curves Fleet Panels (Flat with Rivets) Deep Channels / Concave Surfaces Corrugated Panels	30" / 48" 54" / 60"	20 Yards ▲ 50 Yards	Series 3200 / Series 3210 Series 3220 / Series 3270 Series 3310	Eco-Solvent / Solvent UV / Latex <a href="#">Certified for HP Latex Inks</a>
Wall Graphics (Interior) Window Graphics Multi-Purpose Commercial Vehicle Graphics (Partial) Vehicle Decals Fleet Graphics	Smooth Walls Glass Common Sign Substrates Soft Curves Fleet Panels (Flat without Rivets)	30" / 54" / 60"	50 Yards	Series 3210 / Series 3220 Series 3310 / Series 3420	Eco-Solvent / Solvent UV / Latex <a href="#">Certified for HP Latex Inks</a>
Wall Graphics (Interior) Vehicle Decals Window Graphics	Painted Smooth Walls Glass	54"	50 Yards	Series 3200 / Series 3210 Series 3220 / Series 3420	Eco-Solvent / Solvent UV / Latex
Indoor Advertising Wall Graphics (Interior) Home Décor	Common Sign Substrates Smooth Walls	54"	100 Feet	N/A	Eco-Solvent / Solvent UV
Indoor Advertising Wall Graphics (Interior) Home Décor	Common Sign Substrates Smooth Walls	54"	50 Yards	N/A	Eco-Solvent / Solvent UV

\* See PIB for warranty exclusions ✦ Only available in 48" width ▲ Only available in 54" width

## WRAPITRIGHT®

INSTRUCTIONAL VIDEO LIBRARY



### WATCH THE VIDEO ▶

#### Wet Application of a Window Graphic

Using a wet application can help make your project picture perfect. This video demonstrates how to correctly install window graphics with a wet application.

For more videos, visit [wrapitright.com](http://wrapitright.com)



#### TECHNICAL SERVICES:

📞 1 877 ARLON98 / 1 877 275 6698  
✉ [GraphicsTechnicalSupport@arlon.com](mailto:GraphicsTechnicalSupport@arlon.com)

**Certified for  
HP Latex Inks**

DPF 6000RP White  
DPF 4600LX

# Heavy Duty Digital

Whether your graphics are going cross country, transatlantic or just across town, you will need a film to withstand the extremes.



Wrapped in DPF 4000

	DESCRIPTION	FACE FILM THICKNESS	ADHESIVE	RELEASE LINER	FINISH	APPLICATIONS
<b>ILLUMINITE WRAP™</b>	Fleet Grade * Reflective Film with Low Profile FLITE Technology™	5-Mil (125 Micron)	Clean Removing, Repositionable (Light Gray)	Lay-Flat Polycoated with Low Profile FLITE Technology™	Gloss	Vehicle Graphics (Full, Partial) Vehicle Decals Fleet Graphics Fleet Markings
<b>DPF 2400</b>	Fleet Grade * Reflective Film	5-Mil (125 Micron)	Permanent (Clear)	Lay-Flat Polycoated	Gloss	Fleet Markings Fleet Graphics Vehicle Decals Vehicle Graphics (Full, Partial)
<b>DPF 4000</b>	Industrial Grade Calendered Film	3.5-Mil (90 Micron)	Permanent (Clear)	Lay-Flat Polycoated	Satin	Rail & Ocean Container Markings Fleet Markings
<b>DPF 8000™ ULTRA TACK</b>	Industrial Grade Multi-Purpose Calendered Film for Hard-to-Stick Surfaces	3.5-Mil (90 Micron)	Permanent, Ultra Tack (Clear)	Lay-Flat Polycoated	Satin	Building Wraps Wall Graphics (Exterior) ABS Plastic Graphics
<b>DPF 9000</b>	Industrial Grade Heat & Solvent Resistant Calendered Film	3.5-Mil (90 Micron)	Heat, Solvent Resistant Permanent (Clear)	Lay-Flat Polycoated	Satin	Gasoline Pumps Fleet Markings Boat Decals





Wrapped in IllumiNITE Wrap™ with Series 3220 Overlaminate by High Tech Vinyl Installations



Wrapped in DPF 9000



#### WATCH THE VIDEO ▶

#### Preventing Adhesive Build-Up

Adhesive build-up can collect in a printer when printing film that has a soft and aggressive adhesive system. Learn how to remove adhesive build-up on your wide format printer.

For more videos, visit [wrapitright.com](http://wrapitright.com)

RECOMMENDED SURFACES	DURABILITY (UNPRINTED)	ROLL WIDTHS	ROLL LENGTHS	COMPATIBLE OVERLAMINATE	INK COMPATIBILITY
Smooth, Flat Panels / Compound Curves Moderate Channels / Soft Curves Concave Surfaces / Corrugated Panels Fleet Panels (Flat with Rivets)	7 Years	48"	10 Yards 25 Yards 50 Yards	Series 3200 Series 3210 Series 3220	Eco-Solvent / Solvent UV / Latex <a href="#">Certified for HP Latex Inks</a>
Compound Curves / Deep Channels Concave Surfaces / Corrugated Panels Fleet Panels (Flat with Rivets)	7 Years	48"	10 Yards 25 Yards 50 Yards	Series 3200	Eco-Solvent / Solvent
Corrugated Panels Fleet Panels (Flat without Rivets)	7 Years	30" / 49" 54" / 60"	50 Yards	Series 3220 / Series 3420	Eco-Solvent / Solvent UV / Latex
Brick, Concrete & Stucco Textured Surfaces & Substrates Smooth Walls ABS Plastics	7 Years ✦	30" / 49" 54" / 60"	50 Yards	Series 3210 / Series 3220 Series 3420 / Series 3590	Eco-Solvent / Solvent UV / Latex <a href="#">Certified for HP Latex Inks</a>
Corrugated Panels Fleet Panels (Flat without Rivets)	7 Years	30" / 49" 54" / 60"	50 Yards	Series 3220 / Series 3420	Eco-Solvent / Solvent UV / Latex

\* Fleet Grade exceeds engineering standards ✦ See PIB for warranty exclusions



#### Purchase with Ease

Arlon's commitment to quality and durability is backed up by several warranties depending on the product and usage.

To learn more visit, [arlon.com/support/warranties](http://arlon.com/support/warranties)

**Certified for  
HP Latex Inks**

IllumiNITE Wrap™  
DPF 8000™ Ultra Tack

# Flat Out Impressive

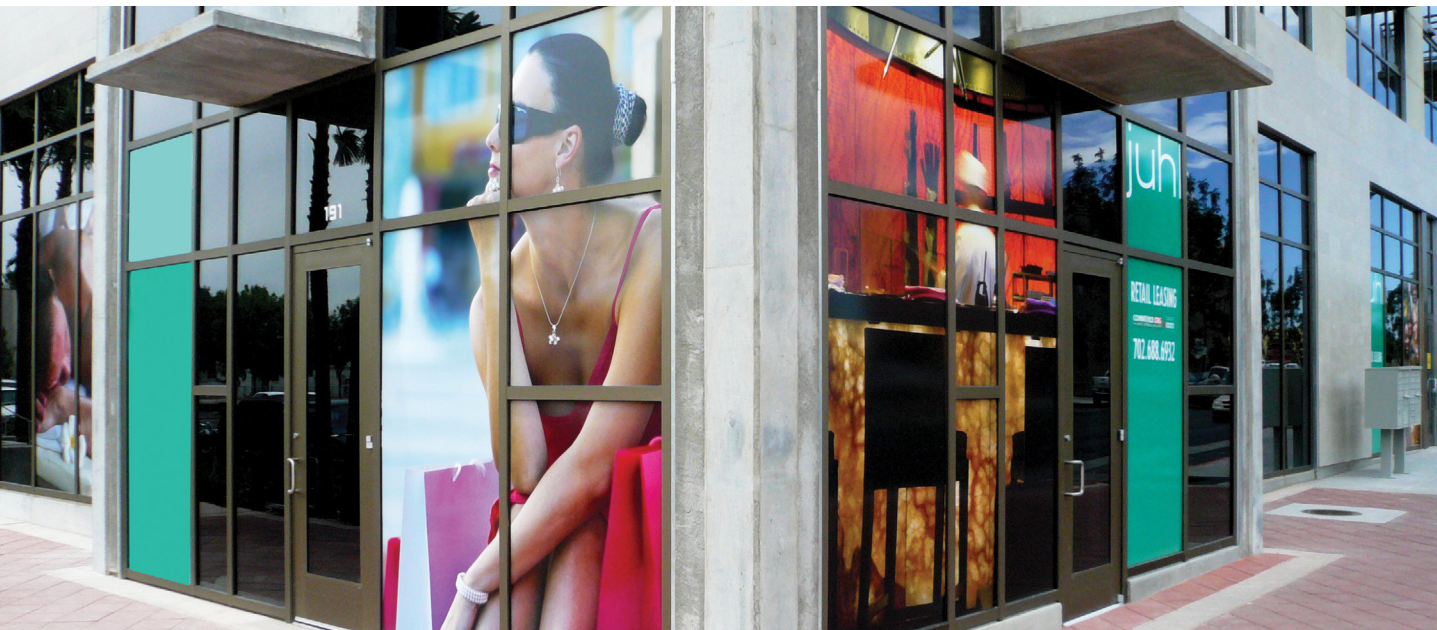
Low cost solutions can still turn heads and these films are designed to do just that for your everyday promotional graphics.



DPF 215

	DESCRIPTION	FACE FILM THICKNESS	ADHESIVE	OPACITY	RELEASE LINER	APPLICATIONS
<b>DPF 510G/M DPF 510GT/MT</b>	Promotional Calendered Permanent Film	3.2-Mil (80 Micron)	DPF 510G/M: Permanent (Clear) DPF 510GT/MT: Permanent (Light Gray)	N/A	Lay-Flat Polycoated	Standard Signage (Permanent) Display Graphics
<b>DPF 510GTR/MTR</b>	Promotional Calendered Removable Film	3.2-Mil (80 Micron)	Removable, Low Tack (Light Gray)	N/A	Lay-Flat Polycoated	Standard Signage (Removable) Display Graphics Window Graphics
<b>DPF 50WD WHITE/CLEAR</b>	Removable Window Film	DPF 50WD White: 3.5-Mil (90 Micron) DPF 50WD Clear: 4-Mil (100 Micron)	Removable (Clear)	N/A	Lay-Flat Polycoated	Window Decals Changeable Signage
<b>DPF 208</b>	Eco Roll-Up Polypropylene	8-Mil (200 Micron)	N/A	80%	N/A	Indoor Advertising Roll-Up Displays Pop-Up Displays
<b>DPF 210 DPF 210PB</b>	Roll-Up Xtreme Polyester	9.8-Mil (250 Micron)	N/A	90%	N/A	Indoor Advertising Roll-Up Displays Pop-Up Displays
<b>DPF 215</b>	Pop-Up Polyester	14.5-Mil (370 Micron)	N/A	90%	N/A	Indoor Advertising Pop-Up Displays





Wrapped in DPF 510GTR



#### WATCH THE VIDEO ▶

#### How to Store Vinyl Rolls

By storing your vinyl properly, you'll always get the best performance from your media. This video shows the key elements to storing vinyl in the right environment.

For more videos, visit [wrapitright.com](http://wrapitright.com)

RECOMMENDED SURFACES	FINISH	DURABILITY (UNPRINTED)	ROLL WIDTHS	ROLL LENGTHS	COMPATIBLE OVERLAMINATE	INK COMPATIBILITY
Common Sign Substrates	Gloss Matte	3 Years	30" * / 54" / 60"	50 Yards	Series 3510	Eco-Solvent / Solvent / Latex
Common Sign Substrates Glass	Gloss Matte	3 Years	54" / 60"	50 Yards	Series 3510	Eco-Solvent / Solvent / Latex
Glass High Energy Surfaces	DPF 50WD White: Matte DPF 50WD Clear: Gloss	DPF 50WD White: 2 Years DPF 50WD Clear: 1 Year	54" / 60"	50 Yards	Series 3200 / Series 3420	Eco-Solvent / Solvent UV / Latex ✦
N/A	Satin	1 Year	36" / 50"	98 Feet	N/A	Eco-Solvent / Solvent
N/A	Satin Pebble	1 Year	36" / 50" / 60" ▲	98 Feet 164 Feet	N/A	Eco-Solvent / Solvent
N/A	Satin	1 Year	36"	98'	N/A	Eco-Solvent / Solvent

🌱 Environmentally Friendly \* Only available in 30" width for DPF 510GT ✦ Not compatible with DPF 50WD Clear ▲ Only 60" width available in Satin finish



## KEEP IT COOL FOR MAXIMUM Shelf Life

Did you know that you can avoid potential problems like mottling, curling and inconsistencies in release liners by storing your film at its recommended temperatures. Excess humidity and heat can greatly affect a film's shelf life—so keep your rolls cool and dry!

# Low Cost, High Potential

Make a big picture statement with our range of banner material. Block out the competition but not your creativity. Seeing is believing!



DPF 303

	DESCRIPTION	FACE FILM THICKNESS	YARN	OPACITY	FINISH	APPLICATIONS
<b>DPF 313 (500D)</b>	Front-Lit Smooth Promotional Banner	13-oz	500D	97%	Gloss Matte	Indoor & Outdoor Advertising Billboard Banners
<b>DPF 313 (1000D)</b>	Front-Lit Smooth Promotional Banner	13-oz	1000D	97%	Gloss Matte	Indoor & Outdoor Advertising Billboard Banners
<b>DPF 303</b>	Super Smooth Double-Sided Blockout Banner	13-oz	250D	100%	Satin	Display Graphics
<b>DPF 310BB *</b>	Front-Lit Black Back Lightweight Banner	9-oz	1000D	100%	Matte	Outdoor Advertising Billboard Banners
<b>DPF 315</b>	Economical Double-Sided Blockout Banner	15-oz	500D	100%	Gloss Matte ✦	Indoor & Outdoor Advertising Billboard Banners Indoor Hanging Graphics
<b>DPF 318</b>	Intermediate Double-Sided Blockout Banner	18-oz	1000D	100%	Gloss Matte ✦	Indoor & Outdoor Advertising Flag Pole Banners





DPF 313 (1000D)

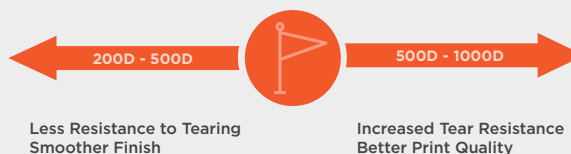


DPF 310BB

DURABILITY (UNPRINTED)	ROLL WIDTHS ▲	ROLL LENGTHS ▲	INK COMPATIBILITY
1 Year	38" / 54"	40 Yards	Eco-Solvent / Solvent UV / Latex
1 Year	30" ♦ / 38" / 48" ♦ 54" / 63"	40 Yards 50 Yards	Eco-Solvent / Solvent UV / Latex <a href="#">Certified for HP Latex Inks</a>
1 Year	38" / 54" / 62"	50 Yards	Eco-Solvent / Solvent UV / Latex
1 Year	126" / 196"	164 Feet	Eco-Solvent / Solvent / UV
1 Year	38" / 54" / 62"	50 Yards	Eco-Solvent / Solvent UV / Latex
1 Year	38" / 54"	50 Yards	Eco-Solvent / Solvent UV / Latex

## Yarn Denier Explained

The strength of a scrim banner is determined by the denier. The denier is the thickness of the thread; the higher the denier, the stronger the banner. 1000 Denier (1000D) banner means that a single thread has been twisted 1000 times to the finished length of an inch (think: string vs rope).



\* DPF 310BB is available by custom order ♦ Double-sided printing recommended on Matte ▲ Custom widths and lengths available by custom order ♦ Only available in 40 yard length

## WRAPITRIGHT®

INSTRUCTIONAL VIDEO LIBRARY



### WATCH THE VIDEO ▶

#### Uploading an Arlon Media Profile into Roland Versaworks

Learn step-by-step instructions on how to properly upload Arlon Media Profiles into Roland VersaWorks RIP software.

For more videos, visit [wrapitright.com](http://wrapitright.com)



## Product Questions?

WE'RE HERE

### CUSTOMER SERVICE:

📞 1 800 232 7161 / 714 985 6300  
✉ [GraphicsOrders@arlon.com](mailto:GraphicsOrders@arlon.com)

Certified for  
HP Latex Inks

DPF 313 (1000D)

# Multiply Your Protection

Shield and protect your everyday signage from the elements. Arlon overlaminates are designed to protect and prolong the life of your graphic.



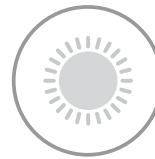
Wrapped in DPF 6700 with Series 3220 Overlamine by  
OFF THE WALL Signs and Graphics



**Prolonged  
Durability**



**Ease of  
Application**



**UV  
Stability**



**Abrasion  
Resistance**



**Quick and  
Clean Removal**







Wrapped in DPF 6000RP White with Series 3310 Overlamine by Graphics Unlimited



Wrapped in DPF 4500G White with Series 3420 Overlamine

	DESCRIPTION	FACE FILM THICKNESS	ADHESIVE	RELEASE LINER	FINISH	DURABILITY	ROLL WIDTHS	ROLL LENGTHS	COMPATIBLE VINYL
<b>SERIES 3270</b>	Premium Cast Overlamine	2-Mil (50 Micron)	Permanent (Clear)	Clay Coated	Gloss Matte Satin	7 Years	30" / 48" 54" / 60"	50 Yards	SLX™ Cast Wrap / DPF 6100XLP / DPF 6000XRP DPF 6000RP White
<b>SERIES 3220</b>	Premium Cast Overlamine	2-Mil (50 Micron)	Permanent (Clear)	Clay Coated	Gloss Matte Satin Luster	7 Years	30" / 48" 54" / 60"	20 Yards ✚ 50 Yards	DPF 6100XLP / DPF 6000XRP / DPF 6000RP White DPF 6500 / DPF 6700 / DPF 4600LX / DPF 4500GT/MT DPF 8000™ Ultra Tack / DPF 9000 / DPF 4000 DPF 4300 / DPF 2400 / IllumiNITE Wrap™
<b>SERIES 3210</b>	Premium Cast Overlamine	1.3-Mil (35 Micron)	Permanent (Clear)	Clay Coated	Gloss	7 Years	30" / 48" 54" / 60"	50 Yards	DPF 6100XLP / DPF 6000XRP / DPF 6000RP White DPF 6500 / DPF 6700 / DPF 4600LX / DPF 4500GT/MT DPF 8000™ Ultra Tack / DPF 4300 / DPF 2400 IllumiNITE Wrap™
<b>SERIES 3310</b> 	Extended Life Polyurethane Overlamine	1.5-Mil (38 Micron)	Permanent (Clear)	Clay Coated	Gloss	10 Years *	54" / 60"	50 Yards	Most Digital and Screen Print Films
<b>SERIES 3420</b>	Calendered Overlamine	3-Mil (75 Micron)	Permanent (Clear)	Clay Coated	Gloss Matte Satin	5 Years	30" / 48" 54" / 60"	20 Yards ✚ 50 Yards	DPF 4600LX / DPF 4500GLX/MLX / DPF 4500GX DPF 4500GT/MT / DPF 4300 / DPF 8200 High Tack DPF 8000™ Ultra Tack
<b>SERIES 3510</b>	Promotional Calendered Overlamine	3.2-Mil (80 Micron)	Permanent (Clear)	Polycoated Kraft	Gloss Matte	3 Years	54" / 60"	50 Yards	DPF 510G/M DPF 510GT/MT DPF 510GTR/MTR

 Environmentally Friendly \* 10 years vertical exposure and up to 4 years horizontal exposure ✚ Only available in Gloss for 54" width



Wrapped in DPF 4500GT with Series 3350 Overlamine

# Clear Solutions

Tough situations require tough solutions. When a standard overlaminate won't do, take your protection up a notch. Protect your graphics from extreme wear and tear while ensuring crystal clear clarity.



**Extreme  
Durability**



**Anti-Graffiti  
Protection**



**Temperature  
& Chemical  
Resistance**



**Abrasion  
Resistance**



**Clarity**





Wrapped in DPF 2400 with Series 3200 Overlaminate by Transport Graphics



Wrapped in DPF 8000™ Ultra Tack with Series 3590 Overlaminate by ECD Customs

	DESCRIPTION	FACE FILM THICKNESS	ADHESIVE	RELEASE LINER	FINISH	DURABILITY	ROLL WIDTHS	ROLL LENGTHS	COMPATIBLE VINYL
<b>SERIES 3200</b>	Premium High Gloss Optically Clear Overlaminate	2-Mil (50 Micron)	Permanent (Clear)	Polyester	Gloss	7 Years	30" / 54" / 60"	10 Yards 100 Feet * 50 Yards	DPF 6100XLP / DPF 6000XRP / DPF 6000RP White/Clear DPF 6500 / DPF 6700 / DPF 4500G Clear / DPF 2400 / IllumiNITE Wrap™ / DPF 45WF / DPF 47WF DPF 50WD White/Clear
<b>SERIES 3350</b>	Anti-Graffiti PVDF Overlaminate	2-Mil (50 Micron)	Permanent (Clear)	Lay-Flat Polycoated	Satin	10 Years	49" / 54"	50 Yards	Most Digital and Screen Print Films
<b>SERIES 3590</b>	Heavy Duty Calendered Overlaminate	12-Mil (305 Micron)	Permanent (Clear)	Clay Coated	Gloss	2 Years	54" / 60"	10 Yards * 25 Yards	DPF 8000™ Ultra Tack / DPF 8200 High Tack

\* Only available in 54" width



